

# Engineering Services:



**your project in safe hands**

## Mechanical

## Systems

## Software

REP delivers competitively priced, cost effective solutions for your engineering requirements. We appreciate your need to be flexible, that's why we have devised a range of delivery and pricing options to meet your business demands.

### Project Management

REP's project management teams ensure that every project adheres to pre-defined time and budget objectives. Regular status reports and customer meetings provide confidence that the project is in safe hands.

### Quality Control

Using an approved quality management system, supported by regular audit and delivery checks, REP ensures your projects are completed to the highest standards.

### Project Delivery

Engineering resource can be provided in a way to best support your needs including:

- Off site Managed Teams based from REP's engineering offices
- On site Managed Teams located alongside your project teams
- Specialist Resource Support placed within your teams

### Flexible Pricing

#### Fixed Price Work

For customers with specific defined requirements, we offer a fixed price solution that provides the security of knowing you'll stay within budget with our fixed pricing option.

#### Time & Materials

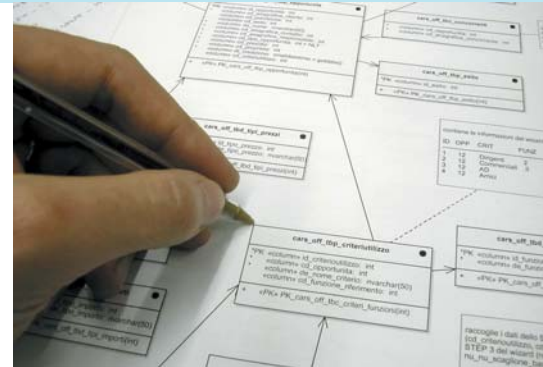
For projects where the exact scope & requirements are unknown at the start, this option provides true flexibility in the direction of the project.

#### Targeted Time & Materials

The project is tracked against known performance metrics with overspend requiring approval. This allows flexibility within the project whilst ensuring control of costs.



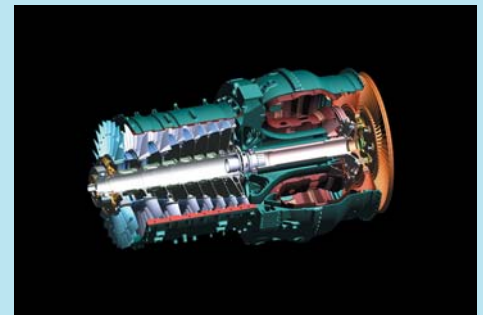
REP's Software & Systems division is registered to ISO 9001:2000 and TickIT by DNV.



### Markets

REP work within markets that demand high quality engineering services including:

- **Aerospace**
- **Rail**
- **Defence**
- **Nuclear**
- **Automotive**



### Contact us:

The Kays Building  
23 The Tything  
Worcester  
WR1 1HD  
United Kingdom

Tel: +44 (0)845 375 2510  
Email: REP@resourcegroup.co.uk  
Web: www.resourcegroup.co.uk/REP

REP is a division of Resource Group



Lufthansa Resource  
Technical Training

Contractair



**your project in safe hands**

## Mechanical

REP (Resource Engineering Projects) provides high quality engineering services to technically challenging markets.

### Mechanical

#### Product Lifecycle Management

Specialising in the setting up of information management systems using industry standard tools such as Teamcenter and PRIMES.

We provide advice on strategy and implementation.

#### CAM Support

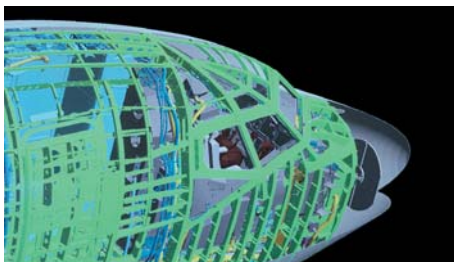
Supporting the design, development and implementation of your post processors.

#### CAD Services

A full range of services including paper to CAD, 2D drawing to 3D model conversions and 3D to 3D software package conversion.

#### Service Offerings:

- Research & Development
- Manufacturing Support
- Consultancy
- Project Management
- Training



## Systems

### System & Software

#### Real-Time Embedded Systems

All aspects of embedded applications, including low level BSPs, device drivers, OS / RTOS, middleware and high level applications.

#### High Integrity Systems

Safety and mission critical system development, for all integrity levels, conforming to industry standards DO178B, DO278B, 50128, 61508, MISRA and Def Stan 00-56.

#### Application Development

Focusing on engineering support applications, ranging from bespoke tools and utilities through to full test environments and products.

#### Service Offerings:

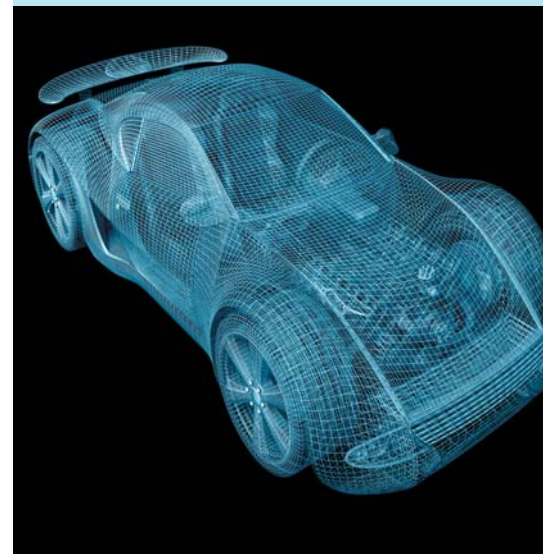
- Requirements Capture & Analysis
- Modelling & Simulation
- Design & Implementation
- Static Analysis
- Independent Verification & Validation
- Systems Integration & Validation
- Certification Support
- Independent Quality Inspection
- Consultancy
- Tool Qualification
- Research & Development



## Software

#### Working with us:

- Bespoke service and products
- Outstanding technical skills
- Exceptional engineering staff
- 20 year track record
- Flexible approach
- Wide skill base
- Professional ethos
- Diverse customer base
- Full project ownership



#### Contact us:

The Kays Building  
23 The Tything  
Worcester  
WR1 1HD  
United Kingdom

Tel: +44 (0)845 375 2510

Email: [REP@resourcegroup.co.uk](mailto:REP@resourcegroup.co.uk)

Web: [www.resourcegroup.co.uk/REP](http://www.resourcegroup.co.uk/REP)

REP is a division of Resource Group